

YOUR ROLE MATTERS WHEN EMERGENCY STRIKES



2022
FEBRUARY

As SGSecure reps, you play an important role in preparing your company against terror threats and emergencies. Your response matters. Here are three areas you can act on to be better prepared for emergencies.

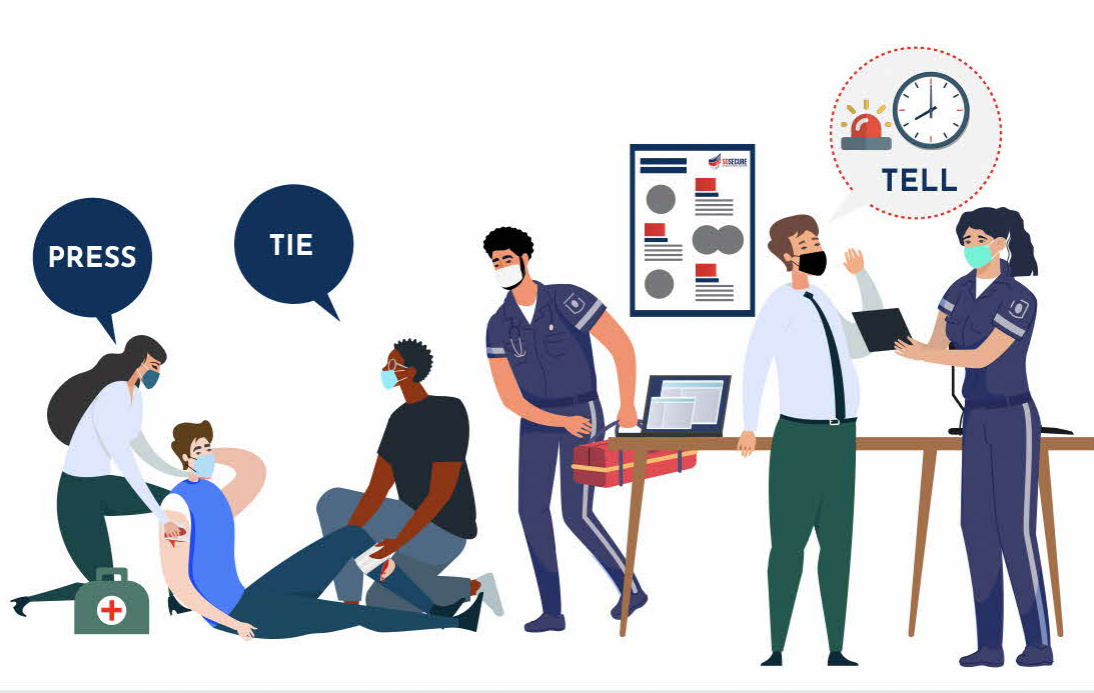
ENSURE EMPLOYEES ARE FAMILIAR WITH THE COMPANY'S EMERGENCY RESPONSE PLAN



An Emergency Response Plan (ERP) should integrate the Fire Emergency Plan, In-Place Protection Plan and Arson Prevention Plan. Ensure your colleagues are familiar with the emergency evacuation plans, evacuee assembly and first aid points.

When emergencies happen, work with the Fire Safety Committee (FSC) and Company Emergency Response Team (CERT) in the company as they evacuate employees. If the emergency arise from a terror attack, do not gather at fixed assembly points and instruct those around to run as far as possible from the site of an attack.

BE EQUIPPED WITH LIFE-SAVING SKILLS



Learning first aid skills and how to operate CPR-AED devices can go a long way in saving lives. Remember “**Press, Tie, Tell**”:

- 1) **Press** directly on the wound to stop bleeding using handkerchiefs or cloths.
- 2) **Tie** - If the bleeding doesn't stop, tie items (such as neckties or belts) at least 5cm above the wound to stop excessive bleeding;
- 3) **Tell** SCDF emergency responders about the injury and time you tied the wound.

CONDUCT TABLE-TOP EXERCISES



Table-top exercises can help your colleagues better understand the various emergency scenarios and what they should do. This includes responses against terror attacks e.g. **Run, Hide, Tell**. It also enables your company to finetune the emergency response plan and identify gaps in contingency plans for various scenarios.

Learn more on how you can be better prepared by joining our **SGSecure@Workplaces Webinar on Mental Wellness: Fostering A Psychologically Resilient Organisation**. It will be held on 16 Mar 2022, 2pm, via Zoom — register your interest by emailing us at SGSecure_Workplaces@mom.gov.sg.